

THE CHRISTY

1,960 square feet.

3 BR 2.5 BA.
 MASTER BEDROOM DOWN WITH
 LARGE WALK-IN CLOSET, SPACIOUS
 EAT-IN KITCHEN, FORMAL DINING RM,
 VAULT IN FOYER AND GREAT ROOM,
 FRONT PORCH, FINISHED BONUS ROOM
 AND 2 CAR GARAGE.

OPTIONAL: BOARD & BATTEN SIDING,
 LARGER GABLE, SEPARATE TUB AND
 SHOWER, DOUBLE VANITY IN MASTER
 BATH, RAISED BAR IN KITCHEN, HALF
 RD. WINDOW DINING ROOM, VAULTED
 CEILING IN DINING ROOM, BRICK GABLES,
 FIREPLACE, AND HARDWOODS.



FRONT ELEVATION "A"



FRONT ELEVATION "B"



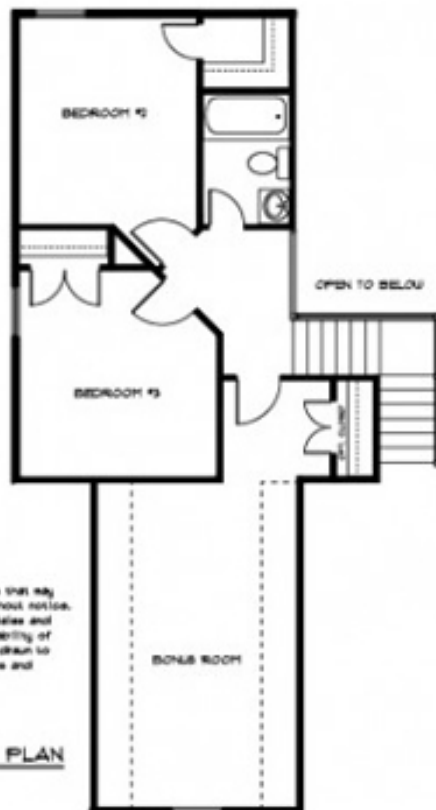
FRONT ELEVATION "C"



FRONT ELEVATION "D"



1ST FLOOR PLAN



2ND FLOOR PLAN



Figures of models and options are illustrative only of the offerings that may be provided at any given community. Offerings may be changed without notice. Not all models or options are offered at all communities. See our Sales and Marketing Representative for additional information regarding availability of models and options. Floor Plans are artist renderings and are not drawn to scale. Dimensions are approximate. Both may vary from actual homes and plans as built.